

Name: _____

HELLO, LITTLE ADVENTURER!

Welcome to SEA LIFE!

Explore the tanks and complete fun activities along the way to get to know wonderful creatures of SEA LIFE and learn more about them.

Have fun on your underwater adventure!



Start your adventure in the Igapo rainforest!

1.

Yikes! At the very beginning of the exhibition, hidden in the rainforest, lives our most dangerous fish! But hold on – which one of these creatures could it be? Take a close look at the animals in the pictures and circle the correct one.

BONUS QUESTION (only for experts):

Why is this most dangerous animal so dangerous?

- A. It produces electricity, and since water conducts electricity, touching the water could give you a powerful electric shock!
- B. It releases toxic ions into the water!
- C. It lives in water so hot that it could cause a serious burn!

A.



B.



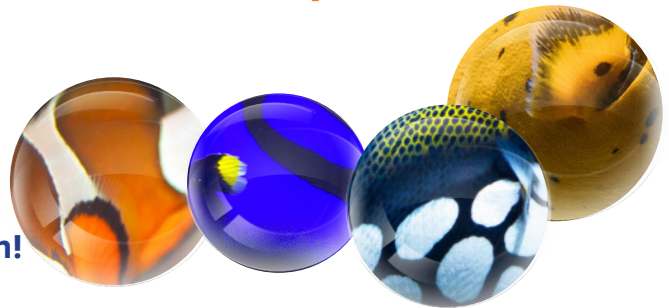
C.



You will find the answers to the next questions from the Tropical isle!

2.

Tropical fish are wonderfully colorful, and some have truly wild patterns! Find the fish that match the patterns and colors shown in the circles. Check the circle once you've found the right fish!



3.

Watch out – this is a poisonous fish! Did you already spot the lionfish in the tropics? Try to guess what the lionfish eats and draw a line to connect the fish to its food!

A.



C.



B.



lionfish



Arrive to the Ocean tank!

4.

The ocean tank is home to blacktip reef sharks! These grey sharks are known for the striking black markings on their fins.

Count how many blacktip reef sharks are in the tank and color the correct number!

Tip: The easiest place to count the sharks is in the Ocean tunnel.

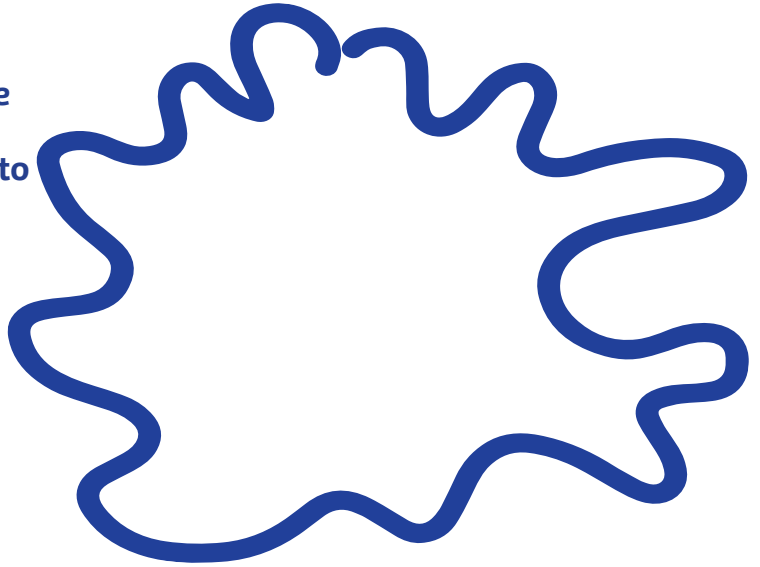


After the Ocean tunnel, it's time for the Bay of rays!

5.

Look up at the ceiling – there you'll see a life-sized model of a fish called the oceanic manta ray! It can grow up to 9 meters wide and has unique flaps around its mouth. If YOU were a fish, would you look more like a ray or maybe a starfish?

Now it's time to get creative!
Draw what kind of fish you would be:



Arrive to the Discovery pool!

6.

Watch the sea urchins for a moment!
Can they move?

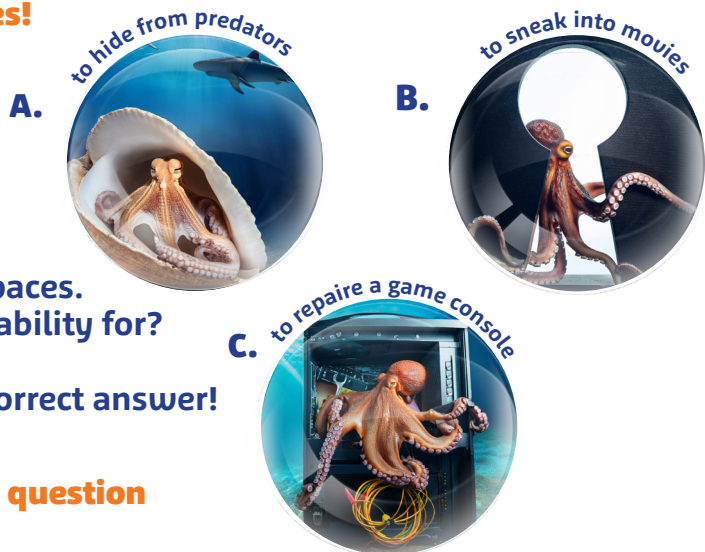
- A. No, they don't move at all!
- B. Yes - they move very slowly!
- C. Yes - they start a running spree every ten seconds!

You'll find the answers to the following question in the SEA LAB marine laboratory, where the giant pacific octopus lives!

7.

This tank is home to the world's largest species of octopus!
Octopuses don't have any bones – their soft bodies allow them to squeeze through incredibly small spaces.
But what do they use this amazing ability for?

Look at the pictures and circle the correct answer!



You will find the answer to the last question at the Conservation Cove!

8.

Go to the far end of the Conservation Cove
and find the biggest tank.
Look for a fish that looks like this guy:

And now pay close attention!
Is it true that this fish is the SMALLEST one in the tank?

- A. Yes
- B. No



Good job, adventurer!



You've successfully completed
all the tasks and learned a lot about
the underwater world!



Here you can write down your
favorite SEA LIFE memory!

